

Western Railway

Divisional Office
Mumbai Central
Mumbai – 400 008

No. C 438/4/Correspondence/2017

Date: 08.01.2018

All concerned CBS/CLS/CGS/CERS/SS of Mumbai Division.

Sub: Dress code for Commercial staff (Booking/Parcel/Goods/PRS).

Ref: Rly Board letter No-E(W)2008/UN-1/10 dated-04.05.2009

...

As of now Rs.5000/- have been provided to all concerned staff for uniform in salary. The uniform is to be purchased/stitched and maintained by the concerned staff. Being frontline staff, it is expected that staff wear the best quality uniform. The details of type of uniform and the colour pattern as prescribed by railway board is as under

Category	GENTS/ LADIES	PATTERN	COLOUR (Raymond brand or Similar)	FABRIC CODE (Raymond brand or Similar)	COLOUR CODE (Raymond brand or Similar)
CBS/CLS/CGS / CERS	Gents	Shirt- Full.Sleeves, Terrycot	Pastel/ Powder blue	0022588	09
		Trouser- Full Terrycot	Oxford blue	4056002643	24
CBS/CLS/CGS/CE RS	Ladies	Saree	Mustard colour with beige border with small prints in the body, border and pallu.		
		Terrycot blouse	Matching colour		
		OR			

Category	GENTS/ LADIES	PATTERN	COLOUR (Raymond brand or Similar)	FABRIC CODE (Raymond brand or Similar)	COLOUR CODE (Raymond brand or Similar)
CBS/CLS/CGS/CE RS	Ladies	Terrycot Salwar	Mustard colour		
		Terrycot Kameez with matching dupatta.	White		
		OR			
		Terrycot Skirt	Mustard colour		
		Terrycot Blouse	White		
CHRI/ARS/ECRC	Gents	Shirt- Half Sleeves, Terrycot	Pastel/ Powder blue	0022588	09
		Trouser- Full Terrycot	Oxford blue	4056002643	24
CHRI/ARS/ECRC	Ladies	Saree	Mustard colour with beige border with small prints in the body, border and pallu.		
		Terrycot blouse	Matching colour		
		OR			
		Terrycot Salwar	Mustard colour		
		Terrycot Kameez with matching dupatta	White		
		OR			
		Terrycot Skirt	Mustard colour		
		Terrycot Blouse	White		

Category	GENTS/ LADIES	PATTERN	COLOUR (Raymond brand or Similar)	FABRIC CODE (Raymond brand or Similar)	COLOUR CODE (Raymond brand or Similar)
CBC/CLC/CGC/ SR.ACC/SR.ALC/S R.AGC ACC/ALC/AGC	Gents	Shirt- Half Sleeves, Terrycot	Solid White	0004177	01
		Trouser- Full Terrycot	Dark Black	4056002643	30
CBC/CLC/CGC/ SR.ACC/SR.ALC/S R.AGC ACC/ALC/AGC	Ladies	Saree	Mustard colour with beige border with small prints in the body border and pallu.		
		Terrycot blouse	Matching colour		
		OR			
		Terrycot Salwar	Mustard colour		
		Terrycot Kameez with matching dupatta.	White		
		OR			
		Terrycot Skirt Terrycot Blouse	Mustard colour White		
Chief Ticket Inspector/ Dy.CTI/ Hd TE/ Sr.TTE, Sr. Train Conductor/ Ticket Collector/TE (other than Rajdhani/Shatabdi and Duranto)	Gents	Trouser- Full Terrycot	Navy Blue	4056002643	24
		Coat Terrycot	Navy Blue	4056002643	24
		Shirt- Full Sleeves, Terrycot	Solid White	0004177	01

Category	GENTS/ LADIES	PATTERN	COLOUR (Raymond brand or Similar)	FABRIC CODE (Raymond brand or Similar)	COLOUR CODE (Raymond brand or Similar)
Chief Ticket Inspector/ Dy.CTI/ Hd TE/ Sr.TTE, Sr. Train Conductor/ Ticket Collector/TE (other than Rajdhani/Shatabdi and Duranto)	Ladies	Saree	Chocolate brown border with small prints in the border and Pallu or Brown saree with beige border		
		Terrycot blouse	Matching Colour		
		Coat Terrycot	Navy Blue	4056002643	24
		OR			
		Terrycot Salwar	Chocolate Brown		
		Terrycot Kameez with matching dupatta	Light Chocolate		
		Coat Terrycot	Navy Blue	4056002643	24
		OR			
		Terrycot Skirt	Chocolate Brown		
		Terrycot Blouse	Matching Colour		
		Coat Terrycot	Navy Blue	4056002643	24

Fabric code and colour code given are of M/s Raymond brand. Staff can procure of any other brand but care should be taken that the fabric & colour is similar to the given fabric & Colour code. In addition to this staff to also procure name badge to be worn by them.

Also Pattern of full sleeves and half sleeves shirt to be worn by staff is attached as "Annexure A", "Annexure B" & of name badge as "Annexure C".

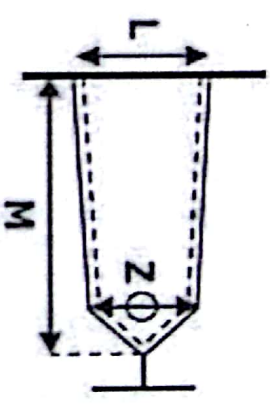
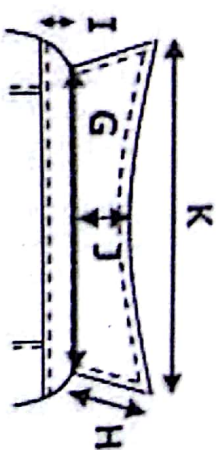
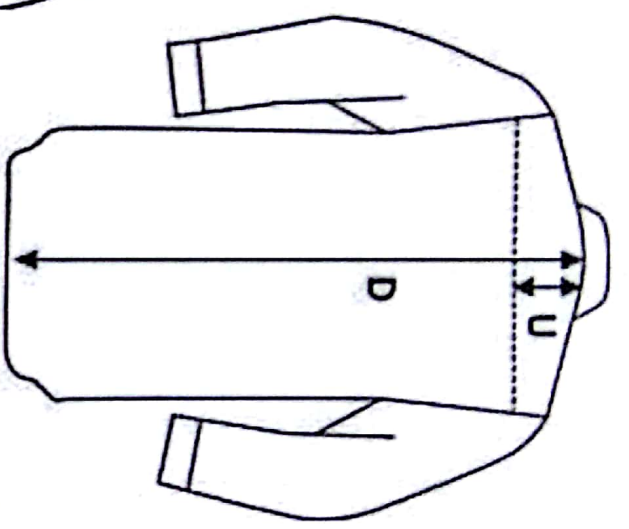
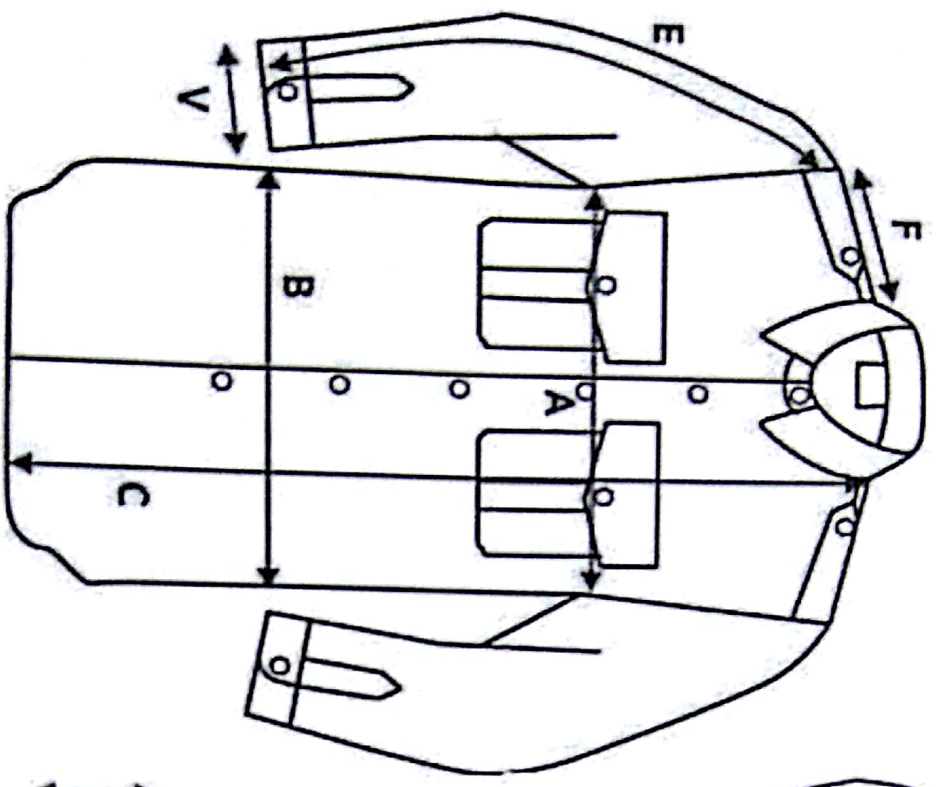
The uniform for Ticket Checking staff of premium trains viz Rajdhani/Shatabdi/Duranto will be advised in due course.

All staff to be in prescribed uniform on or before 26.01.18. After the said date if any staff is detected without uniform, disciplinary action will be initiated.

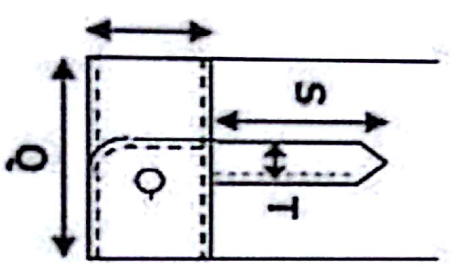


(Abhay Sanap)
DCM(Sub) - BCT

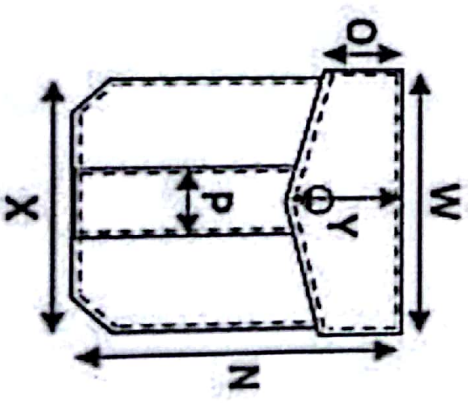
C/- Sectional CMIs: for necessary action & compliance.



Shoulder tab

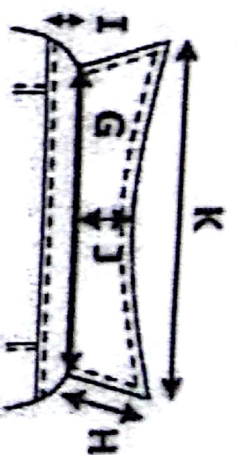
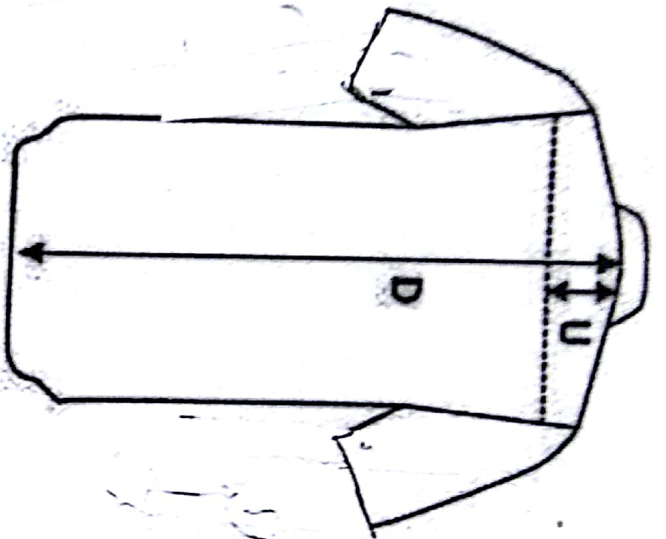
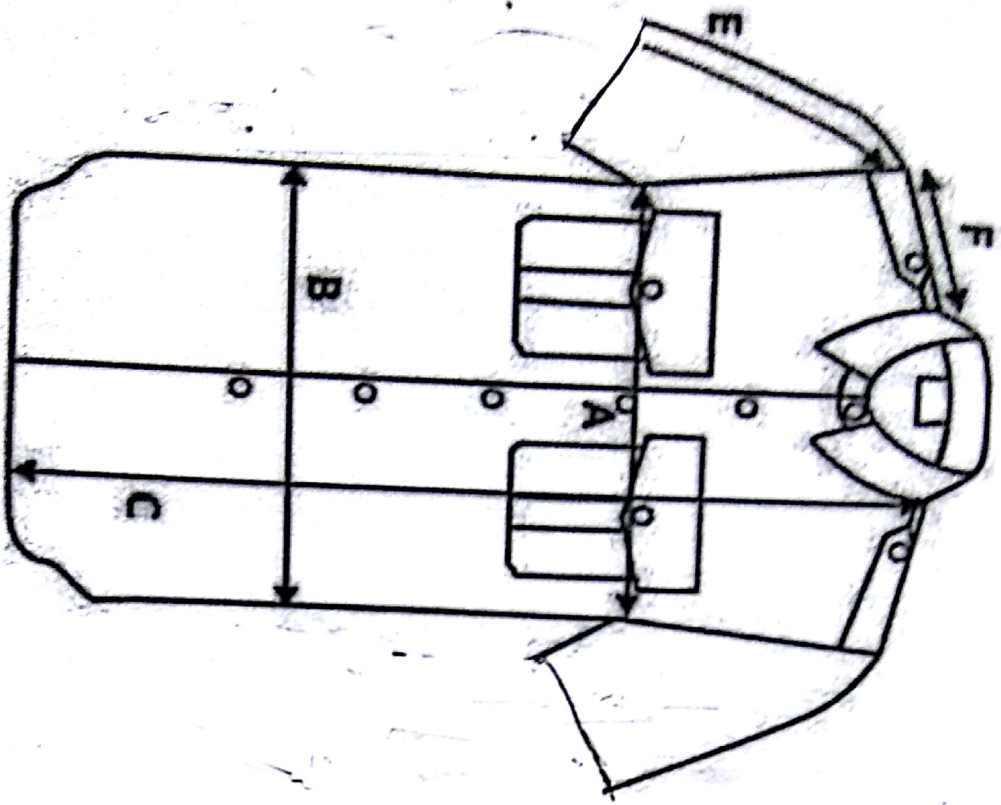


Sleeve cuff

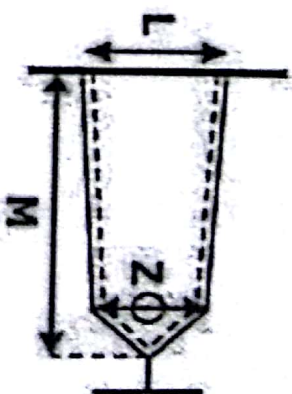


Flap pockets

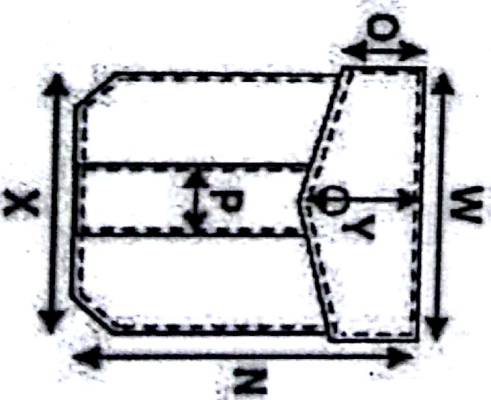
Uniform pattern- Half sleeves shirt



Collar



Shoulder tab



Flap pockets

Material –Acrylic (White Colour)

Western Railway Logo- Red colour

Name- Black Colour

Size- 3 inch x 1 inch



Pattern- Name Badge